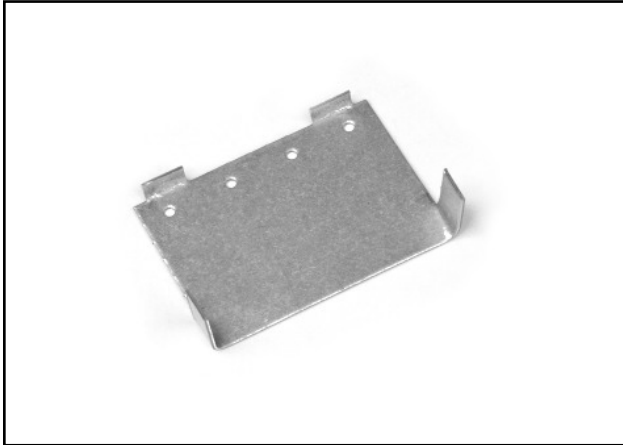


1. Using a pair of pliers, fold all four tabs on the sensor bracket so that they are a little shy of 90 degrees. This allows for the bracket to slide easily over the wire of the trap.



2. Position the sensor bracket at the edge of the trap so the two small tabs on the bracket are against the edge wire and the two larger tabs are behind the next wire. Verify that the chosen location does not interfere with the operation of the trap door.



3. Use pliers to fold the two large tabs down over the wire to secure the rear of the bracket to the trap.



4. Use the pliers to fold the small tabs on the front of the bracket over the edge of the trap to secure the front of the bracket to the trap.



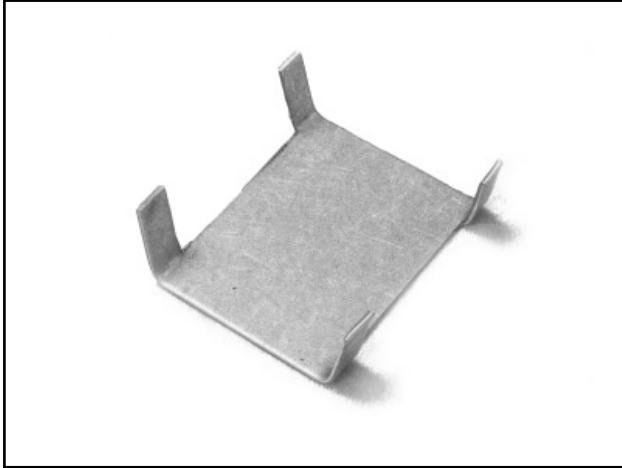
5. Position the sensor at the edge of the bracket so the thicker side is facing away from the trap and the holes align with one of the three mounting positions on the bracket. Verify that the chosen location does not interfere with the operation of the door. Secure the sensor to the bracket with a zip tie.



6. Once the sensor is secured to the bracket, thread the cable through the trap so that the cable is directed away from the trap opening.



7. Using a pair of pliers, fold all four tabs on the magnet bracket so that they are a little shy of 90 degrees. This allows for the bracket to slide easily over the wire of the trap.



9. Use pliers to fold the four tabs down over the wire to secure the bracket to the trap door.



8. Position the magnet bracket on the door so it is directly below the sensor when the door is in the open position. Verify that the chosen mounting position does not interfere with the operation of the trap door.



10. Place the magnets on the bracket and position them so they line up with the thicker edge of the sensor. Verify magnet placement does not interfere with the operation of the trap door. Use the Trap-Alert™ unit to verify placement of the magnets.

